



New topographic mapping

ICA - Mountain Cartography Workshop, Taurewa, New Zealand
1-5 September 2012

Principles?

Continuous features – continuous symbols

Accurately defined features – clear graphic definition

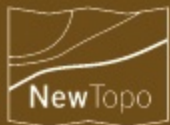
Relief: subtle, integrating minimum colour influence

Avoid contrasting lineal elements

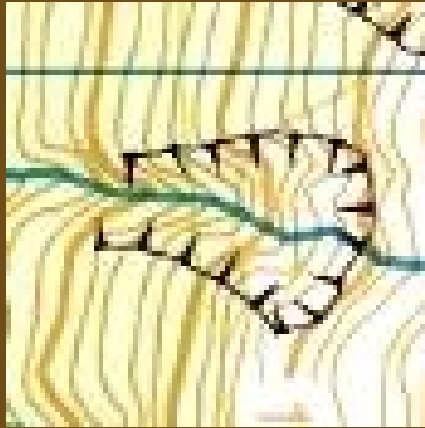
Careful use of black colour

Re-evaluate traditional symbols

Simplify symbol families



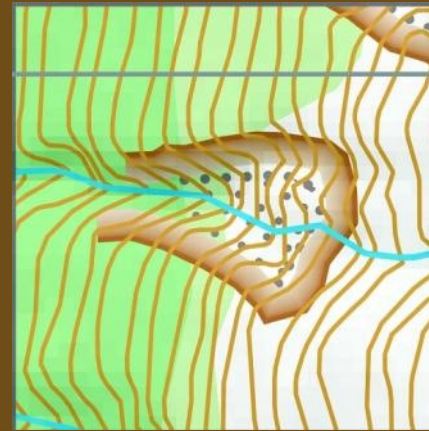
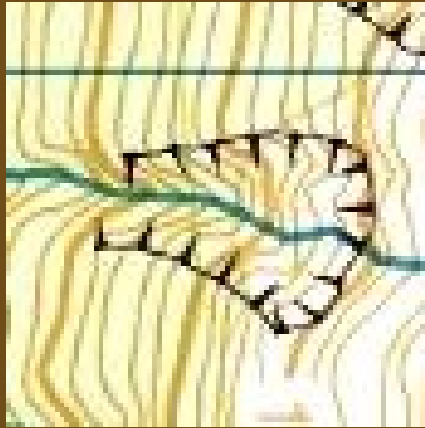
Cliff
or
river
terrace



Waterfall



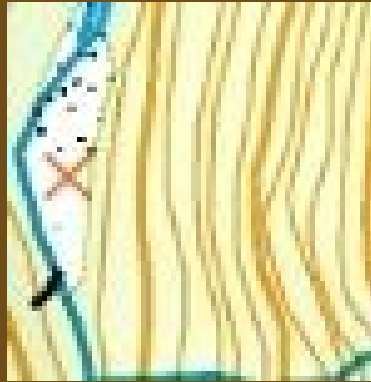
Cliff
or
river
terrace



Waterfall



Hot spring



Swamp

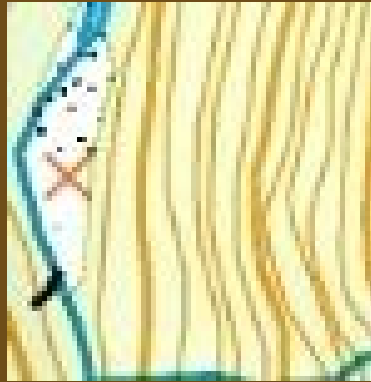


Pine forest



New topographic mapping
ICA - Mountain Cartography Workshop, Taurewa, New Zealand

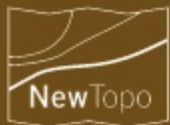
Hot spring



Swamp



Pine forest



New topographic mapping
ICA - Mountain Cartography Workshop, Taurewa, New Zealand

Relief shading

a vital visual component

balance with other components essential

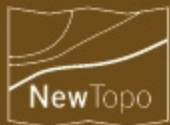
specially produced by Geographx

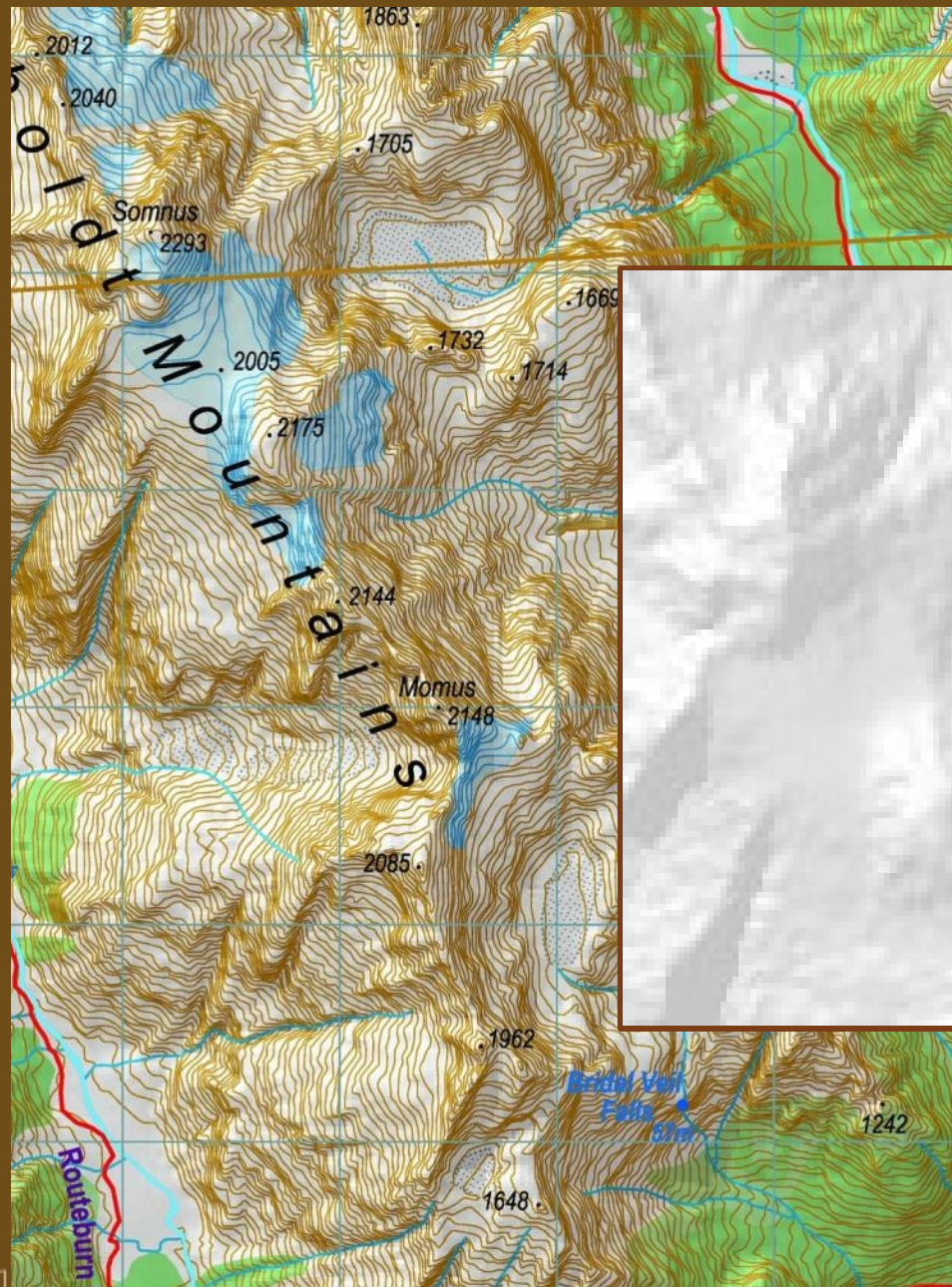
20m pixel: typically...

flat areas 10C, 7Y, 7M, 0K

deep shadow 40C, 30M, 25Y, 4K

result is a clear legible image





Black relief difficulties:

- Difficult balance between relief and text
- Conflict with area tints, lines and text
- Gloomy or muddy appearance of map

CMY no K relief advantages:

- Managed balance between relief and text
- Managed discrimination between elements
- Clean map image with increased legibility



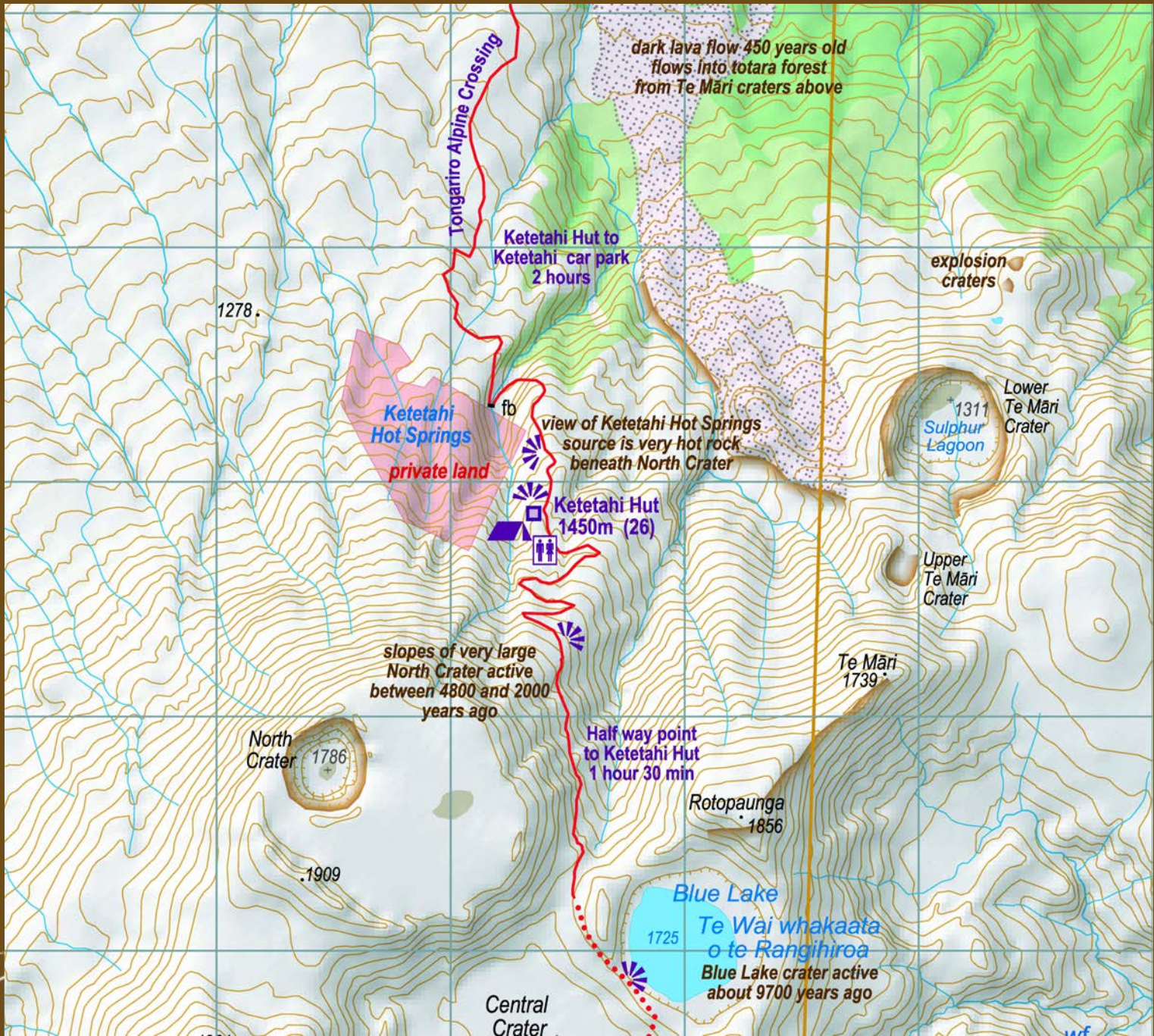
Offset printing

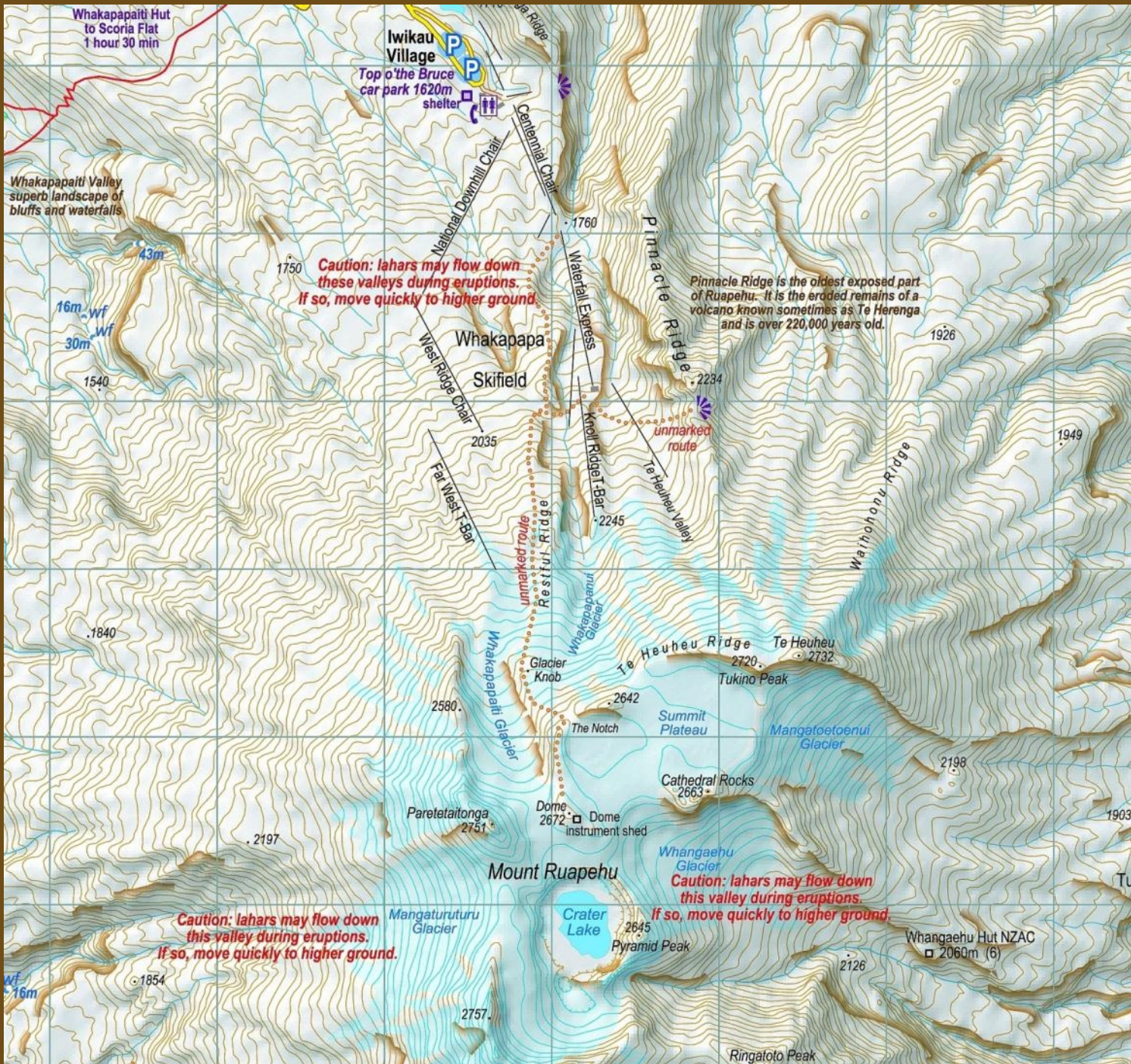
`printing' is not just *printing*
new technology is amazing
design to the machine capabilities
printer uses Heidelberg and HP Indigo

Paper

`paper' is not just *paper*
useful to know the paper's characteristics
two-sided surface differences
94gsm high-wet-strength and 113gsm Sumo







Topographic maps

Published by NewTopo
August 2012



**Thanks for your attention
and the discussion**